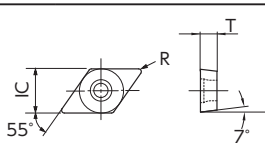


<55 degree Rhombic Positive type>

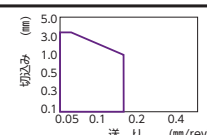
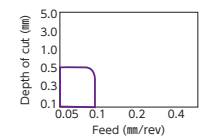
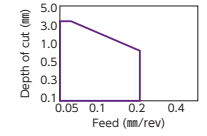
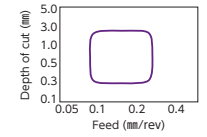
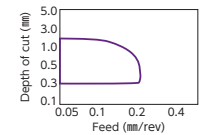
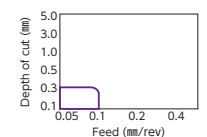
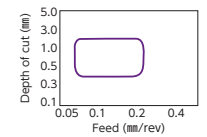
Item Number	IC	T	Relief angle
DC_0702	6.35	2.38	7°
DC_11T3	9.525	3.97	7°



Material	P	M	K	N	S	H
Steel	●	●	●	●	●	●
Stainless Steel	●	●	●	●	●	●
Cast Iron	●	●	●	●	●	●
Non-Ferrous Material	●	●	●	●	●	●
Heat Resistant Alloy	●	●	●	●	●	●
Hardened Material	●	●	●	●	●	●

● : 1st Choice
● : 2nd choice

Shape	ISO Item Number	Inch Item Number	R	Carbide										Chip Control Range	For applicable holder, see pages:	
				PVD Coated						CVD Coated						
				ST4	ZM3	QM3	VM1	TM4	DT4	DM4	CP1	CP7	KM1			
	DCGT 070200 FN AM3		0.03	●	●	●	●	●	●	●	●	●	●	●		
	070201 FN AM3		0.1	●	●	●	●	●	●	●	●	●	●	●	●	
	070202 FN AM3		0.2	●	●	●	●	●	●	●	●	●	●	●	●	
	070204 FN AM3		0.4	●	●	●	●	●	●	●	●	●	●	●	●	
	070201M FN AM3		*0.08	●	●	●	●	●	●	●	●	●	●	●	●	
	070202M FN AM3		*0.18	●	●	●	●	●	●	●	●	●	●	●	●	
	070204M FN AM3		*0.38	●	●	●	●	●	●	●	●	●	●	●	●	
	DCGT 11T300 FN AM3		0.03	●	●	●	●	●	●	●	●	●	●	●	●	
	11T302 FN AM3		0.2	●	●	●	●	●	●	●	●	●	●	●	●	
	11T304 FN AM3		0.4	●	●	●	●	●	●	●	●	●	●	●	●	
	11T301M FN AM3		*0.08	●	●	●	●	●	●	●	●	●	●	●	●	
	11T302M FN AM3		*0.18	●	●	●	●	●	●	●	●	●	●	●	●	
11T304M FN AM3		*0.38	●	●	●	●	●	●	●	●	●	●	●	●		
DCMT 070202 FN AM3		0.2									●					
070204 FN AM3		0.4									●					
DCMT 11T302 FN AM3		0.2									●					
11T304 FN AM3		0.4									●					
11T308 FN AM3		0.8									●					
	DCGT 070201M AMX		*0.08				●	●	●	●						
	070202M AMX		*0.18				●	●	●	●						
	070204M AMX		*0.38				●	●	●	●						
	DCGT 11T301M AMX		*0.08				●	●	●	●						
	11T302M AMX		*0.18				●	●	●	●						
	11T304M AMX		*0.38				●	●	●	●						
	DCGT 070200 AZ7		0.03		●											
	070201M AZ7		*0.08		●											
	070202M AZ7		*0.18		●											
	DCGT 11T300 AZ7		0.03		●		●	●	●							
	11T301M AZ7		*0.08		●		●	●	●							
	11T302M AZ7		*0.18		●		●	●	●							
	11T304M AZ7		*0.38		●		●	●	●							
11T308 AZ7		0.8		●		●	●	●								
	DCMT 070202 ENA AZ8		0.2								●					
	070204 ENB AZ8		0.4								●					
	070208 ENB AZ8		0.8								●					
	DCMT 11T302 ENA AZ8		0.2								●					
	11T304 ENB AZ8		0.4								●					
	11T308 ENB AZ8		0.8								●					
	DCET 11T301M R/4 AT		*0.08					R								
	11T302M R/4 AT		*0.18					R								
	DCET 0702005 R/4 KHG		0.05				●									
	0702008 R/4 KHG		0.08				●									
	0702018 R/4 KHG		0.18				●									
	070202 R/4 KHG		0.2				●									
	DCET 11T3005 R/4 KHG		0.05				●	R								
	11T3008 R/4 KHG		0.08				●	R								
11T3018 R/4 KHG		0.18				●	R									
11T302 R/4 KHG		0.2				●	R									
	DCET 0702008 R/4 UHG		0.08					R								
	DCET 11T3008 R/4 UHG		0.08					R								



G25
G27

*Inserts having 01M, 02M or 04M as the R code can be used for machining when the component drawing specifies that the radius is less than R=0.1, R=0.2 or R=0.4 respectively.
 ● : Standard stock ● : New standard stock ■ : Scheduled to be produced by order ★ : Standard stock (Specified)