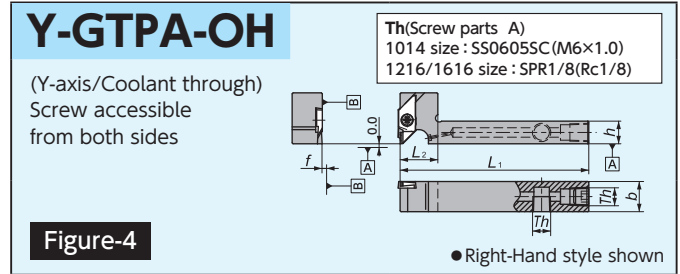
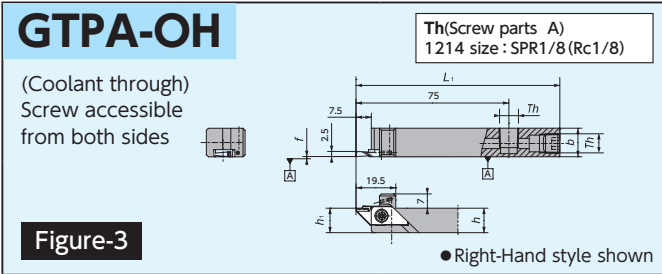
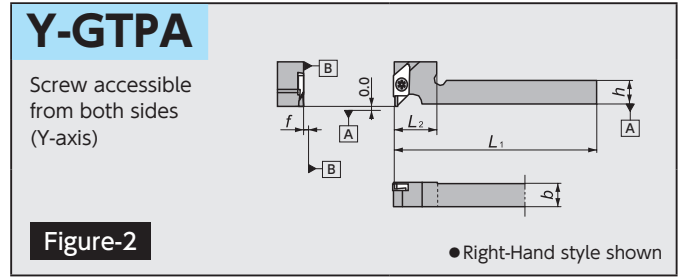
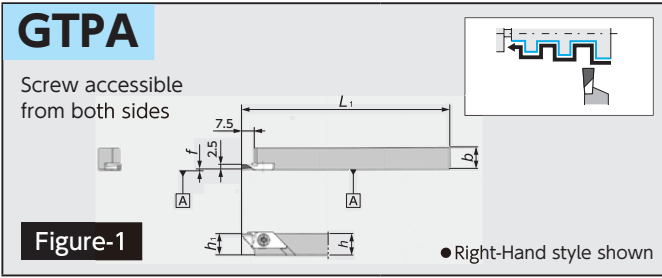


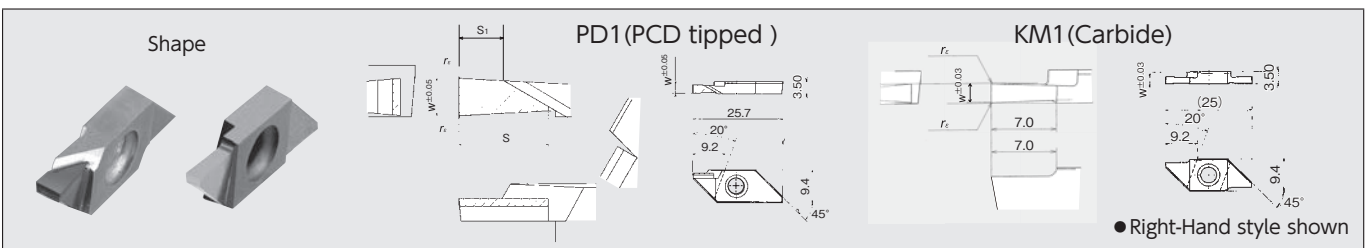
■ GTPA Series Best tool for Aluminum Spool Machining



■ GTPA Series - Toolholders

Figure	Code No.		Item Number	Stock		Dimensions (mm)						Groove Width Range (mm) w	Gage insert 	Spare Parts				
	R	L		R	L	h	b	L ₁	h ₁	f	L ₂			Clamp Screw 	Wrench 			
1		5552401	GTPA 1010	●		10	10	120	10	0.1	—	2.0 } 2.5	GTPA	LRIS-4 * 10PW	CLR-15S			
		5552419	1212	●		12	12		12									
		5577291	1616	●		16	16		16									
2		5563820	Y-GTPA 1216	●		12	16	120	—	0.1	20					GTPA	LRIS-4 * 12PW	CLR-15S
3		5912845	GTPA 1214H-OH	●		12	14	100	12	0.1	—							
4		5930185	Y-GTPA 1014FSS-OH	●		10	14	80	—	0.1	15							
		5911482	1216HS-OH	●		12	16	100			20							
		5911490	1616H-OH	●		16	16	100			25							

■ GTPA Series - Inserts

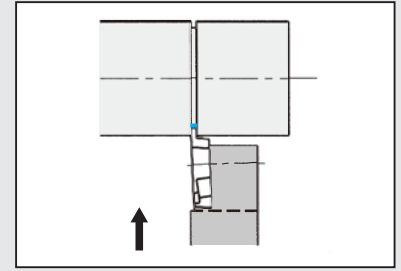
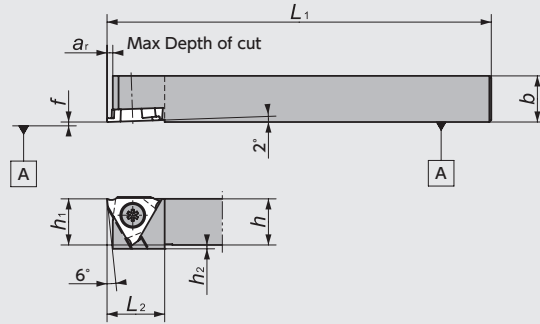


Item Number	Dimensions (mm)					PCD		Carbide		
	w	S	S ₁	r _e	Max Depth of cut	PD1	Stock	KM1	Stock	
GTPA20FRN01	2.0	6.0	4.0	R0.1 MAX	5.0	5552385	●			
20FRN01		—	—		6.0				5576525	●
20FRN01-SH		4.0	2.0		3.0	5966114	●			
GTPA25FRN01	2.5	6.0	3.0		5.0	5552393	●			
25FRN01		—	—		6.0				5576533	●
25FRN01-081		4.0	1.0		3.0	5561808	●			

GTT Series

GTT

Screw accessible from both sides

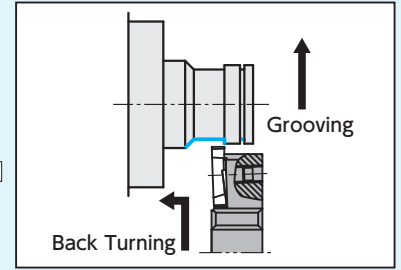
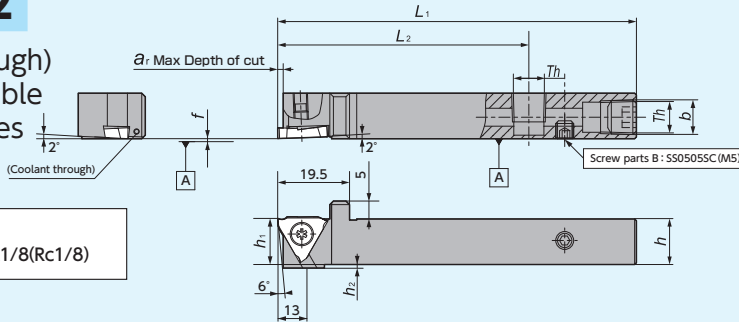


● Right-Hand style shown

Figure-1

GTT-OH2

(Coolant through)
Screw accessible from both sides

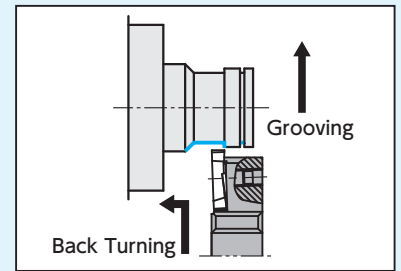
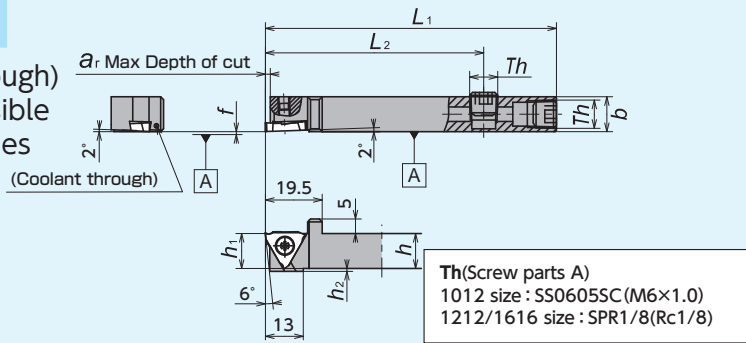


● Right-Hand style shown

Figure-2

GTT-OH

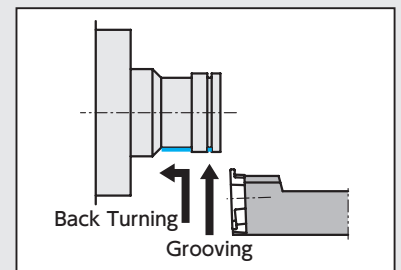
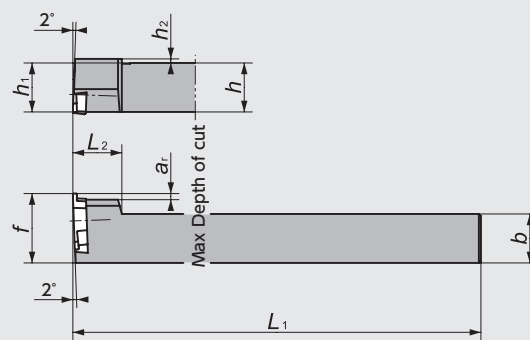
(Coolant through)
Screw accessible from both sides



● Right-Hand style shown

Figure-3

CH-GTT

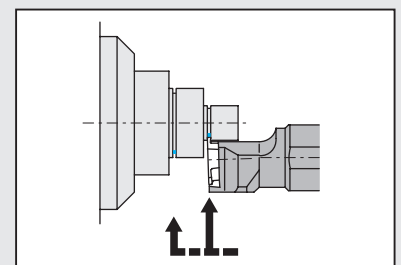
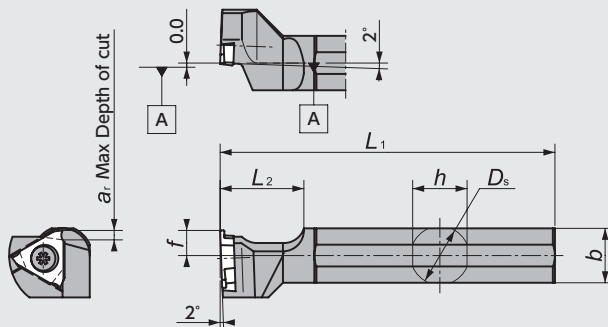


● Left-Hand style shown
☆ Takes Right-hand insert

Figure-4

DS-GTT


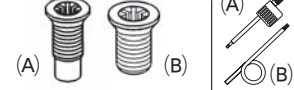
(DS Holder)



● Left-Hand style shown
☆ Takes Right-hand insert

Figure-5

GTT Series - Toolholders

Figure	Code No.		Item Number	Stock		Dimensions (mm)										Groove Width Range (mm) w	Gage insert 	Spare Parts			
	R	L		R	L	h	b	L ₁	h ₁	f	L ₂	a _r	h ₂	D _s	Clamp Screw			Wrench			
1	5107305	5107313	GTT^R/L08F00	●	●		8											 Right : LR-S-4*10PW (A) Left : LR-S-4*5.8 (B)			
	5608682		0810F00	●		8	10		8								LR-S-4*10PW (A)				
	5107206	5107214	08K00	●	●		8												Right : LR-S-4*10PW (A) Left : LR-S-4*5.8 (B)		
	5608690		0810K00	●			10														
	5107321	5107339	10F00	●	●	10	10	80											CLR-15S (A)		
	5107222	5107230	10K00	●	●			120				1.6			3		0.30				
	5107347	5107354	12F00	●	●	12	12	80												LR-S-4*10PW (A)	
	5107248	5107255	12K00	●	●			120							1		3.00				
	5459896	5551387	16H00	●	●	16	16	100												※1	
	5173687	5173679	16K00	●	●			120							0						
	5530852	5780317	20K00	●	●	20	20	125	20											0.30 } 3.00	
	5780309	5780291	25M00	●	●	25	25	150	25	0	15										
	5107362	5107370	10F15	●	●	10	10	80												GTMH32 GTMX32 H22~25 TBMH32 G61	
	5107263	5107271	10K15	●	●			120													
	5537220	5537147	12F15	●	●	12	12	80													1.45 } 3.00
	5537246	5537162	12K15	●	●			120													
	5537261	5537188	16H15	●	●	16	16	100													2.50 } 3.00
	5537287	5537204	16K15	●	●			120													
	5107388	5107396	10F25	●	●	10	10	80													2.50 } 3.00
	5107289	5107297	10K25	●	●			120													
5537238	5537154	12F25	●	●	12	12	80										2.50 } 3.00				
5537253	5537170	12K25	●	●			120														
5537279	5537196	16H25	●	●	16	16	100										2.50 } 3.00				
5537295	5537212	16K25	●	●			120														
2	5035381		GTT^R/L12H00-OH2	●		12	12	100	12									LR-S-4*10PW (A)			
	5043997		16X00-OH2	●		16	16	120	16	0	70	1.6									
3	5921705		GTT^R/L1012H00-OH	●		10			10									CLR-15S (A)			
	5890157		GTTR12H00-OH	●		12		100	12	0	70	1.6									
	5921713		GTT^R/L16H00-OH	●		16	16		16												
4	5659248		CH-GTT^R/L10H00	●		10	10	100	10	15								LR-S-4*9 (B)			
	5659255		12H00	●		12	12	100	12	17		1.5									
	5960836		16H00	●		16	16	100	16	21											
5	5348560		DS-GTT^R/L14F	●		13	13	80										LR-S-4*9 (B)			
	5348081		15H	●		15	15	100													
	5341532		16X ※2	●				95													
	5278288		19	●		18	18														
	5278304		20	●		19	19	120													
	5324041		22 ※2	●		21	21														
	5483433		25MET	●		24	24	150													
	5317144		25	●		24	24	120													
5937693		32	●		30	30	150														

※1 Would be changed by insert

※2 Compatible with 16mm / 22mm round shank DS Series holders DS-Sleeve → G104

New Products
 Tool Materials / Selection Guide
 Micrograin Carbide, BIDE/MCS, PCD
 PVD/CVD-coated Carbide, CBN and Ceramics
 Insert Item List
 General Turning Toolholders
 Unique Swiss Tooling
 Grooving / Side Turning
 Threading
 Shaper
 ID Tooling
 Application Introduction
 Endmills
 Rotating Tools
 Information
 Index

● GTMH32 (Full radius style)

Shape	Item Number	Dimensions (mm)				PVD Coated Carbide			
		w	L	r _ε	Max Depth of cut	ZM3			
						R	Stock	L	Stock
<p>• Right-Hand style shown</p>	GTMH32050^R/_LE025	0.50	1.2	0.25	0.9	5446125	●		
	070^R/_LE035	0.70	2.0	0.35	1.6	5446141	●		
	100^R/_LE05	1.00		0.50		5160759	●		
	150^R/_LE075	1.50	0.75	5501200		●			
	200^R/_LE10	2.00	3.0	1.00	2.7	5160775	●		
	250^R/_LE125	2.50		1.25		5921671	●		
	300^R/_LE15	3.00		1.50		5436720	●		

● GTMH • X32 (Flat top chipbreaker)

Shape	Item Number	Dimensions (mm)				PVD Coated Carbide				Carbide			
		w	L	r _ε	Max Depth of cut	ZM3				KM1			
						R	Stock	L	Stock	R	Stock	L	Stock
Short <p>• Right-Hand style shown</p>	GTMX32100^R/_LSS	1.00	2.0	0.05	1.6	5523345	●						
	150^R/_LSS	1.50	3.0			5523337	●						
	200^R/_LSS	2.00				5523329	●						
	Mirror finish GTMH32100^R/_LSSH	1.00	2.0	0.05	1.6				5599394	●			
	150^R/_LSSH	1.50	3.0			5599386	●						
	200^R/_LSSH	2.00				5599378	●						
Long <p>• Right-Hand style shown</p>	GTMX32100^R/_LLS	1.00	2.0	0.05	1.6	5523295	●						
	150^R/_LLS	1.50	3.0			5523303	●						
	200^R/_LLS	2.00				5523311	●						