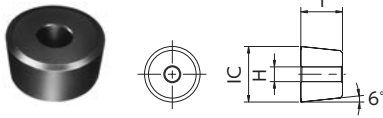


# Machining Mill Rolls with NTK Ceramics and CBNs

## CDH..Series - Inserts

● : 1st Choice   ● : 2nd choice

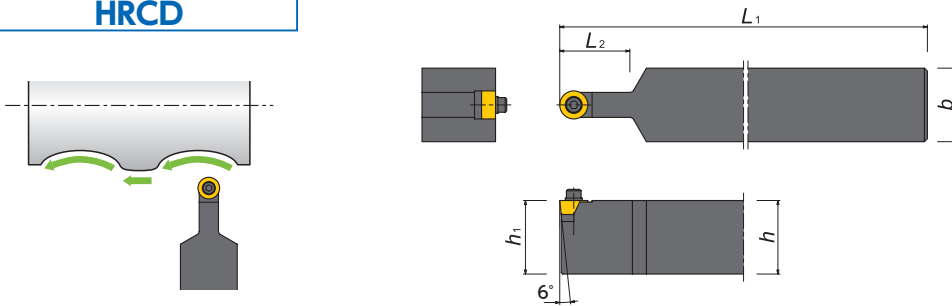


Steel	P								
Stainless Steel	M								
Cast Iron	K	●	●	●	●	●	●	●	●
Non-Ferrous Material	N								
Heat Resistant Alloy	S			●	●	●	●	●	●
Hardened Material	H	●	●	●	●	●	●	●	●

Item Number	Dimensions(mm)			Ceramics					CBN
				Alumina - TiC		SiAlON	Whisker		
	IC	T	H	HC2	HC7	SX9	WA1	WA5	B22
CDH22PN	12.70	6.35	3.18	●					
33PN	19.05	9.52	6.35	●					
42PN	25.40	12.70	6.75						
43PN	25.40	19.05	6.75						
53PN	31.75	19.05	9.92						

## CDH..Series - Toolholders





**HRCD**



### ● Holders

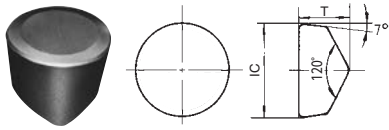
Item Number	Stock			Dimensions(mm)					Gage insert
	R	N	L	h	b	L <sub>1</sub>	h <sub>1</sub>	L <sub>2</sub>	
HRCD-22		●		50	50	300	50	30	CDH22
-33		●		50	50	300	50	50	CDH33
-42				50	50	300	50	80	CDH42
-43				50	50	300	50	80	CDH43
-53				50	50	300	50	100	CDH53

### ● Spare Parts

Item Number	Clamp Screw	Washer	Shim	Wrench
HRCD-22	 CS0316	 W120	 HACDH22	 LW-2.5
HRCD-33	CS0625	W110	HACDH33	LW-5
HRCD-42	1/4-20UNC * 11/4	W106	HACDH42	LWU-4
HRCD-43	1/4-20UNC * 11/2	W106	HACDH43	LWU-4
HRCD-53	3/8-16UNC * 11/2	W107	HACDH53	LWU-5

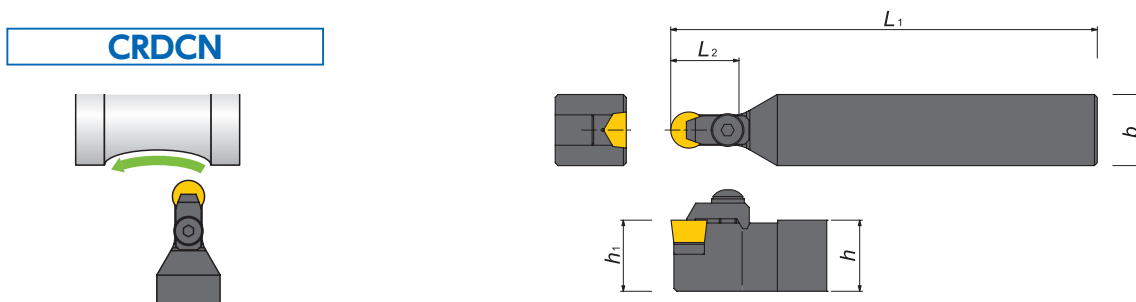
## RCGX..Series - Inserts

● : 1st Choice   ● : 2nd choice



Item Number	Dimensions(mm)		Ceramics					CBN
			Alumina - TiC		SiAlON	Whisker		
	IC	T	HC2	HC7	SX9	WA1	WA5	B22
RCGX 060400 T00520	6.35	4.76				●	●	
060400 T02020	6.35	4.76		★			★	
060600 P07015	6.35	6.21					★	
060700 T00520	6.35	7.94				●		
090700 T00520	9.525	7.94			●	●		
090700 T00820	9.525	7.94					●	
090700 T01020	9.525	7.94				●		
090700 K20015	9.525	7.94		★				★
0908 PN	9.525	7.86	●					
0908 TNB	9.525	7.86			●	●		
120700 T00520	12.70	7.94			●	●		
120700 T00820	12.70	7.94					●	
120700 T01020	12.70	7.94				●		
120700 Z01520	12.70	7.94				●		
120700 K20015	12.70	7.94		★				★
1208 PN	12.70	7.86	●					
1208 TBN	12.70	7.86			●			

## RCGX..Series - Toolholders



### ● Holders

Item Number	Stock			Dimensions(mm)				Gage insert		
	R	N	L	h	b	L <sub>1</sub>	h <sub>1</sub>		f	L <sub>2</sub>
CRDCN2525M06				25	25	150	25	—	20	RCGX0607(08)
2525M09				25	25	150	25	—	20	RCGX0907(08)
2525M12				25	25	150	25	—	20	RCGX1207(08)

### ● Spare Parts

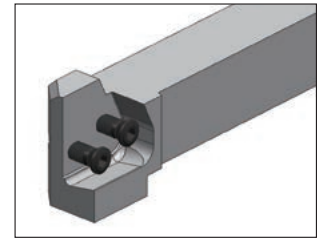
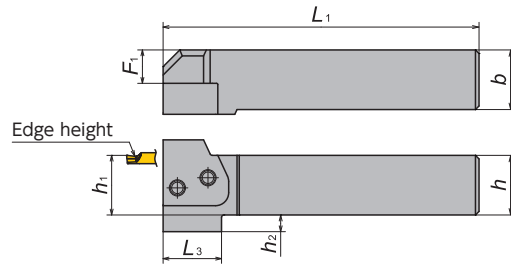
Item Number	Clamp Screw	Washer	Shim	Clamp	Spring pin	Wrench
CRDCN3225P06	BS0520	WS-5	HARCGX06	HC35KR-4099	—	LW-3
3225P09	BS0625	WS-6	HARCGX0908V	HC35KR-6075	2 * 8AW	LW-4
3225P12	BS0625	WS-6	HARCGX1208V	HC35KR-6076	2.5 * 8AW	LW-4

New Products  
 Tool Materials / Selection Guide  
 BIDEIMS, PCD, Micrograin Carbide, PVD Coated Carbide, CBN and Ceramics  
 Insert Item List  
 General Turning Toolholders  
 Unique Swiss Tooling  
 Grooving / Side Turning  
 Threading  
 Shaper  
 ID Tooling  
 Application Introduction  
 Endmills  
 Rotating Tools  
 Information  
 Index

## Modular Holdet Body

### GTWP-H

#### Straight style toolholder

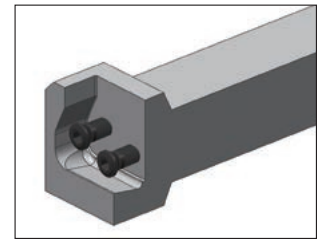
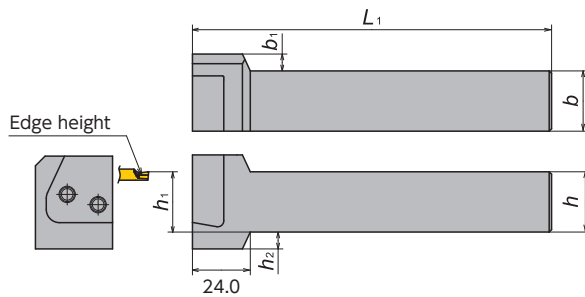


Right-Hand style shown

Toolholder	Stock		Dimensions(mm)							Parts	
	R	L	$h$	$b$	$h_1$	$L_1$	$F_1$	$h_2$	$L_3$	Screw	Wrench
GTWP <sup>R/L</sup> 2020-H	●	●	20.0	20.0	20.0	107.5	9	8	28.5	FSI28-6.0×18	LW-4
2525-H	●	●	25.0	25.0	25.0	132.5	14	7	24.5	FSI28-6.0×18	LW-4
3232-H	●	●	32.0	32.0	32.0	152.5	21	—	—	FSI28-6.0×18	LW-4

### GKWP-H

#### L-style toolholder



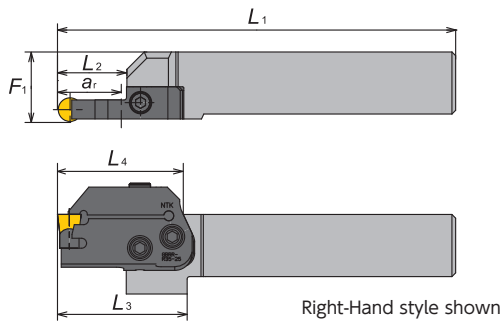
Right-Hand style shown  
\*Use opposite hand blade

Toolholder	Stock		Dimensions(mm)						Parts	
	R	L	$h$	$b$	$h_1$	$L_1$	$b_1$	$h_2$	Screw	Wrench
GKWP <sup>R/L</sup> 2020-H	●	●	20.0	20.0	20.0	124	12	8	FSI28-6.0×18	LW-4
2525-H	●	●	25.0	25.0	25.0	149	7	7	FSI28-6.0×18	LW-4
3232-H	●	●	32.0	32.0	32.0	169	—	—	FSI28-6.0×18	LW-4

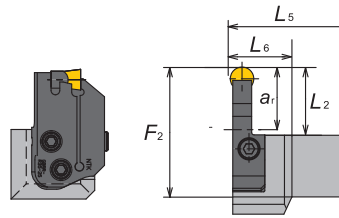
## RCGX/RPGX..Series - Blade

### GBRR/L

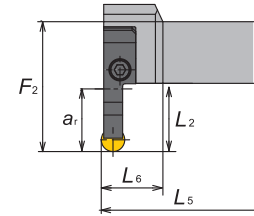
For GTWP-H



For GWPL-H



For GWPR-H



#### ● Right hand

Hand	Blade number	Stock	Holder	Insert	Dimensions(mm)								
					L <sub>1</sub>	L <sub>2</sub>	L <sub>3</sub>	L <sub>4</sub>	L <sub>5</sub>	L <sub>6</sub>	F <sub>1</sub>	F <sub>2</sub>	a <sub>r</sub>
Right	GBRR-R23-19	●	GTWPR2020-H	RCGX0604	130.1	22.6	51.1	45.6	125.0	25.0	23.0	42.6	19.0
			GKWPL2020-H	RPGX0604	130.1	22.6	51.1	45.6	125.0	25.0	23.0	42.6	19.0
			GTWPR2525-H	RCGX0604	155.1	22.6	47.1	50.7	150.0	25.0	28.0	47.6	19.0
			GKWPL2525-H	RPGX0604	155.1	22.6	47.1	50.7	150.0	25.0	28.0	47.6	19.0
			GTWPR3232-H	RCGX0604	175.1	22.6	—	53.2	170.0	25.0	35.0	54.6	19.0
	GKWPL3232-H	RPGX0604	175.1	22.6	—	53.2	170.0	25.0	35.0	54.6	19.0		
	GBRR-R35-25	●	GTWPR2020-H	RCGX0907(08)	135.2	27.7	56.2	45.6	125.0	25.0	23.0	47.7	25.4
			GKWPL2020-H	RPGX0907(08)	135.2	27.7	56.2	45.6	125.0	25.0	23.0	47.7	25.4
			GTWPR2525-H	RCGX0907(08)	160.2	27.7	52.2	50.7	150.0	25.0	28.0	52.7	25.4
			GKWPL2525-H	RPGX0907(08)	160.2	27.7	52.2	50.7	150.0	25.0	28.0	52.7	25.4
			GTWPR3232-H	RCGX0907(08)	180.2	27.7	—	53.2	170.0	25.0	35.0	59.7	25.4
	GKWPL3232-H	RPGX0907(08)	180.2	27.7	—	53.2	170.0	25.0	35.0	59.7	25.4		
GBRR-R45-28	●	GTWPR2020-H	RCGX1207(08)	137.7	30.2	58.7	45.6	125.0	25.0	23.0	50.2	28.5	
		GKWPL2020-H	RPGX1207(08)	137.7	30.2	58.7	45.6	125.0	25.0	23.0	50.2	28.5	
		GTWPR2525-H	RCGX1207(08)	162.7	30.2	54.7	50.7	150.0	25.0	28.0	55.2	28.5	
		GKWPL2525-H	RPGX1207(08)	162.7	30.2	54.7	50.7	150.0	25.0	28.0	55.2	28.5	
		GTWPR3232-H	RCGX1207(08)	182.7	30.2	—	53.2	170.0	25.0	35.0	62.2	28.5	
GKWPL3232-H	RPGX1207(08)	182.7	30.2	—	53.2	170.0	25.0	35.0	62.2	28.5			

Note : All dimensions shown are obtained when blade is set in the holder.

#### ● Left hand

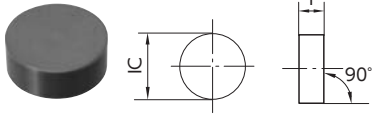
Hand	Blade number	Stock	Holder	Insert	Dimensions(mm)								
					L <sub>1</sub>	L <sub>2</sub>	L <sub>3</sub>	L <sub>4</sub>	L <sub>5</sub>	L <sub>6</sub>	F <sub>1</sub>	F <sub>2</sub>	a <sub>r</sub>
Left	GBRL-R23-19	●	GTWPL2020-H	RCGX0604	130.1	22.6	51.1	45.6	125.0	25.0	23.0	42.6	19.0
			GKWPR2020-H	RPGX0604	130.1	22.6	51.1	45.6	125.0	25.0	23.0	42.6	19.0
			GTWPL2525-H	RCGX0604	155.1	22.6	47.1	50.7	150.0	25.0	28.0	47.6	19.0
			GKWPR2525-H	RPGX0604	155.1	22.6	47.1	50.7	150.0	25.0	28.0	47.6	19.0
			GTWPL3232-H	RCGX0604	175.1	22.6	—	53.2	170.0	25.0	35.0	54.6	19.0
	GKWPR3232-H	RPGX0604	175.1	22.6	—	53.2	170.0	25.0	35.0	54.6	19.0		
	GBRL-R35-25	●	GTWPL2020-H	RCGX0907(08)	135.2	27.7	56.2	45.6	125.0	25.0	23.0	47.7	25.4
			GKWPR2020-H	RPGX0907(08)	135.2	27.7	56.2	45.6	125.0	25.0	23.0	47.7	25.4
			GTWPL2525-H	RCGX0907(08)	160.2	27.7	52.2	50.7	150.0	25.0	28.0	52.7	25.4
			GKWPR2525-H	RPGX0907(08)	160.2	27.7	52.2	50.7	150.0	25.0	28.0	52.7	25.4
			GTWPL3232-H	RCGX0907(08)	180.2	27.7	—	53.2	170.0	25.0	35.0	59.7	25.4
	GKWPR3232-H	RPGX0907(08)	180.2	27.7	—	53.2	170.0	25.0	35.0	59.7	25.4		
GBRL-R45-28	●	GTWPL2020-H	RCGX1207(08)	137.7	30.2	58.7	45.6	125.0	25.0	23.0	50.2	28.5	
		GKWPR2020-H	RPGX1207(08)	137.7	30.2	58.7	45.6	125.0	25.0	23.0	50.2	28.5	
		GTWPL2525-H	RCGX1207(08)	162.7	30.2	54.7	50.7	150.0	25.0	28.0	55.2	28.5	
		GKWPR2525-H	RPGX1207(08)	162.7	30.2	54.7	50.7	150.0	25.0	28.0	55.2	28.5	
		GTWPL3232-H	RCGX1207(08)	182.7	30.2	—	53.2	170.0	25.0	35.0	62.2	28.5	
GKWPR3232-H	RPGX1207(08)	182.7	30.2	—	53.2	170.0	25.0	35.0	62.2	28.5			

Note : All dimensions shown are obtained when blade is set in the holder.

# Machining Mill Rolls with NTK Ceramics and CBNs

## RNGN..Series - Inserts

● : 1st Choice    ● : 2nd choice



Steel	P							
Stainless Steel	M							
Cast Iron	K	●	●	●	●	●	●	●
Non-Ferrous Material	N							
Heat Resistant Alloy	S			●	●	●	●	●
Hardened Material	H	●	●	●	●	●	●	●

Item Number	Dimensions(mm)		Ceramics					CBN
	IC	T	Alumina - TiC		SiAlON	Whisker		B22
			HC2	HC7	SX9	WA1	WA5	
RNGN120400T00520	12.7	4.76				●		
120400T00820	12.7	4.76					●	
120400T00525	12.7	4.76				●		
120400T01020	12.7	4.76				●		
120400T01025	12.7	4.76	●					
120400T02025	12.7	4.76				●		
RNGN120700E002	12.7	7.94				●		
120700E007	12.7	7.94	●					
120700T00520	12.7	7.94				●	●	
120700T00525	12.7	7.94				●	●	
120700T00820	12.7	7.94						●
120700T01020	12.7	7.94					●	
120700T02025	12.7	7.94	●					
120700Z01520	12.7	7.94					●	
120700K20015	12.7	7.94		★				★
RNGN150700T00520	15.875	7.94				●		
150700T00525	15.875	7.94				●	●	
150700T00820	15.875	7.94						●
RNGN190700T00520	19.05	7.94				●		
190700T00525	19.05	7.94				●		
190700T00820	19.05	7.94						●
190700T01020	19.05	7.94					●	
190700K20015	19.05	7.94						●
RNGN250700T00520	25.4	7.94				●	●	
250700T00820	25.4	7.94						●
RNGN120400S	12.70	4.76						●



Top full-face CBN

## RNGN..Series - Toolholders

### C54/CRDNN

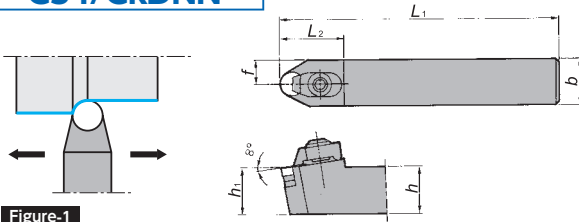


Figure-1

### C55/CRGNR

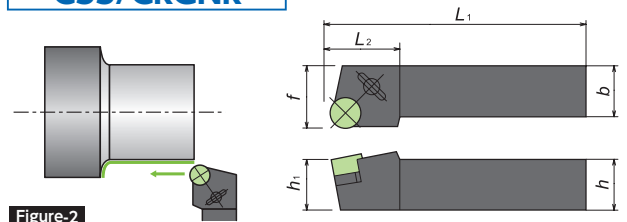


Figure-2

Right-Hand style shown

### ● Holders

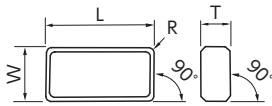
Figure	Item Number	Stock			Dimensions(mm)						Gage insert
		R	N	L	h	b	L <sub>1</sub>	h <sub>1</sub>	f	L <sub>2</sub>	
1	C54M-44		●		25	25	160	25	12.5	33	RN□N1204 (1207)
	CRDNN2525M12		●		25	25	150	25	12.5	34	
	3225P12		●		32	25	170	32	12.5	34	
2	C55%-33	●			19	19	140	19	28	30	RNGN1204
	-44	●		●	25	25	160	25	30	30	RN□N1204 (1207)
	-45	●			32	25	160	32	30	30	
	CRGN%3225P12	●			32	25	170	32	32	30	

### ● Spare Parts

Figure	Item Number	Clamp	Shim	Clamp Screw	Shim Screw	Wrench	Snap ring
1	C54M-44						
	CRDNN2525M12	CC08M	ARN42	BS0835W	M3 * 12	LW-4	SR08
	3225P12						
2	C55%-33			BS0829W			
	-44	CC08M	ARN42	BS0835W	M3 * 12	LW-4	SR08
	-45						
	CRGN%3225P12						

## LNM..Series - Inserts

● : 1st Choice   ● : 2nd choice



Steel	P								
Stainless Steel	M								
Cast Iron	K	●	●	●	●	●	●	●	●
Non-Ferrous Material	N								
Heat Resistant Alloy	S				●	●	●	●	●
Hardened Material	H	●	●	●	●	●	●	●	●

Item Number	Dimensions(mm)				Ceramics					CBN
					Alumina - TiC		SiAlON	Whisker		
	w	L	s	R	HC2	HC7	SX9	WA1	WA5	B22
<b>LNM6688PNX8</b>	19.05	38.10	12.70	3.2					●	
<b>6688SN2</b>	19.05	38.10	12.70	3.2				●		
<b>6688SNX6</b>	19.05	38.10	12.70	3.2		●				

## RBGX..Series - Inserts

● : 1st Choice   ● : 2nd choice

Steel	P								
Stainless Steel	M								
Cast Iron	K	●	●	●	●	●	●	●	●
Non-Ferrous Material	N								
Heat Resistant Alloy	S				●	●	●	●	●
Hardened Material	H	●	●	●	●	●	●	●	●

Item Number	Dimensions(mm)				Ceramics					CBN
					Alumina - TiC		SiAlON	Whisker		
	IC	IC <sub>1</sub>	T <sub>1</sub>	T	HC2	HC7	SX9	WA1	WA5	B22
<b>RBGX16SPN</b>	16	8	8	13	●					
<b>16SSN2</b>	16	8	8	13				●		
<b>16S</b>	16	8	8	13						●
<b>20SPN</b>	20	10	10	15	●					
<b>20S</b>	20	10	10	15						●
<b>26SPN</b>	26	14	10	15	●					
<b>26SSN3</b>	26	14	10	15				●		