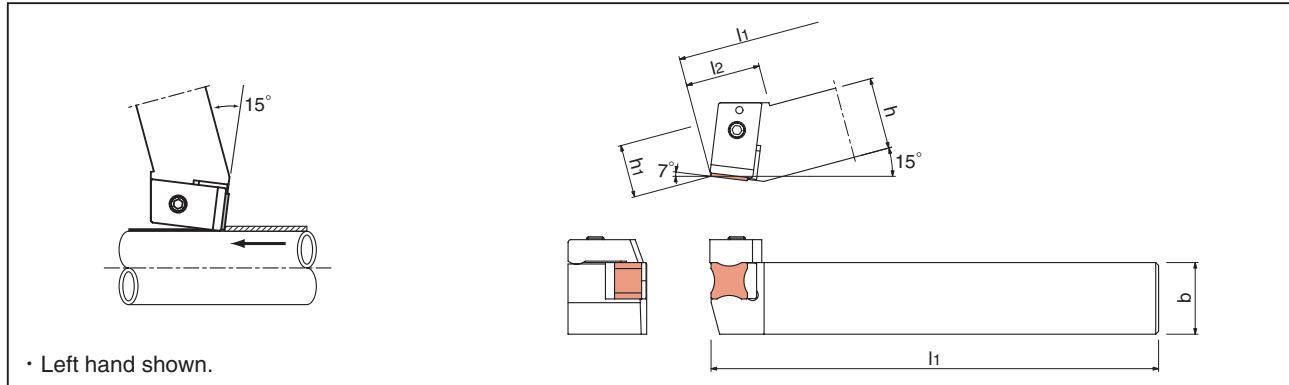



Tube Scarfing

ATS

(HN59ATS type [Right hand] · HN60ATS type [Left hand])

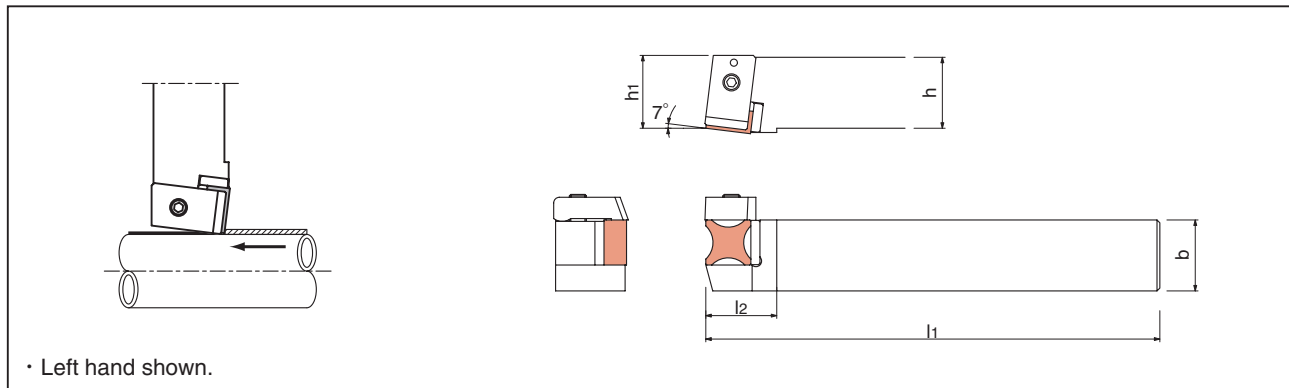



Toolholder	Stock		Dimensions (mm)					Insert			
	R(59)	L(60)	h	b	l1	h1	l2		TSN45 TSN55		
HN ^{60/59} ATS-33E ATS-44E ATS-44E-5			19	19	160	12.5	26				
	★		25	25	160	18.5	26				
			25	25	160	18.5	26				

★ : 2 weeks delivery

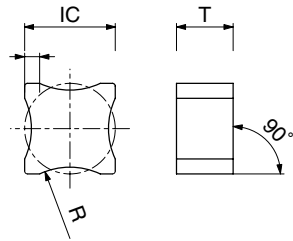
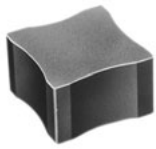
BTS

(HN59BTS type [Right hand] · HN60BTS type [Left hand])



Toolholder	Stock		Dimensions (mm)					Insert			
	R(59)	L(60)	h	b	l1	h1	l2		TSN45 TSN55		
HN ^{60/59} BTS-33E BTS-44E BTS-44E-5			19	19	160	19	25				
			25	25	160	25	25				
			25	25	160	25	25				

● Inserts



Insert Number	Ceramic	Dimensions (inch)		R
	CX3	IC	T	
TSN 45-20 T0625	●	1/2	5/16	.785
45-25 T0625	●			.985
45-30 T0625	●			1.180
45-40 T0625	●			1.575
46A-12 EF	●	1/2	.394	.475
46A-15 EF	●			.590
46A-20 EF	●			.785
46A-25 EF	●			.985
46A-30 EF	●			1.180
46A-40 EF	●			1.575
46A-50 EF	●			1.970
46A-70 EF	●			2.760
55-20 T0625	●	5/8	5/16	.785
55-25 T0625	●			.985
55-30 T0625	●			1.180
55-40 T0625	●			1.575
55-50 T0625	●			1.970

● : Stock

● Parts

Parts	Clamp	Clamping screw	Shim	Shim screw	Wrench
Toolholder					
HN ^{60/59} ATS-33E ATS44E	HC ^{60/59} TS-4	WS0620	ASN423	M3×5.5	LW-3
ATS44E-5			AZT659D	M3×8	
			ASN522	M3×8	
HN ^{60/59} BTS-33E BTS-44E			HAZT1255A	M4×5.5	
			ASN423	M3×5.5	
BTS-44E-5	AZT659D	M3×8			
	ASN522	M3×8			
			HAZT1255A	M4×5.5	

