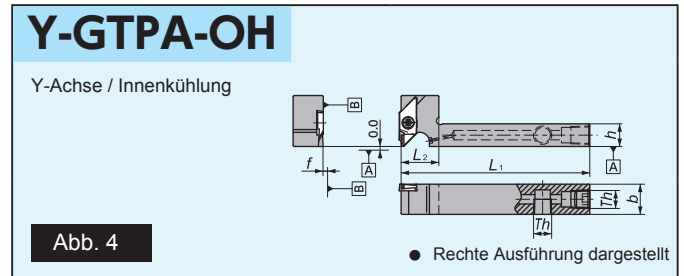
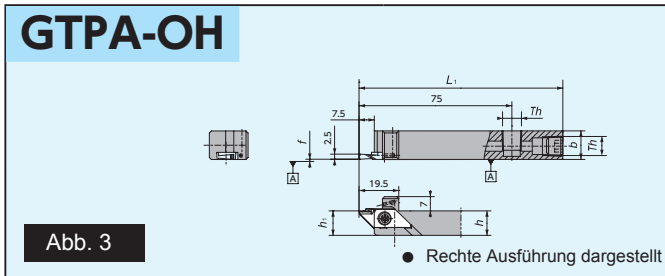
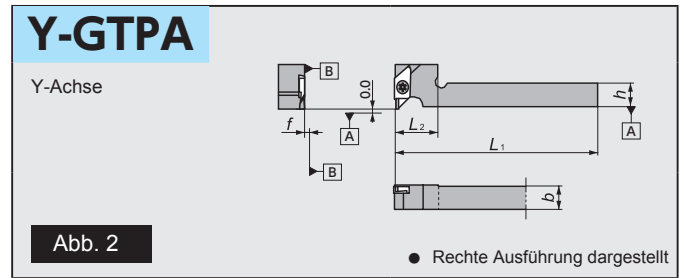
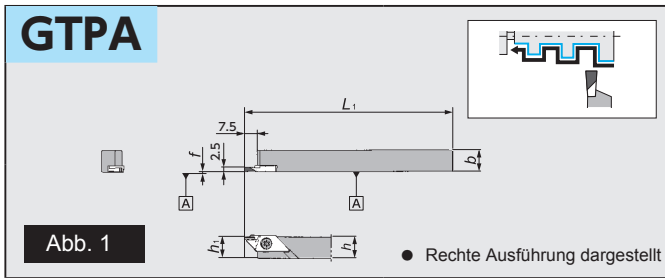


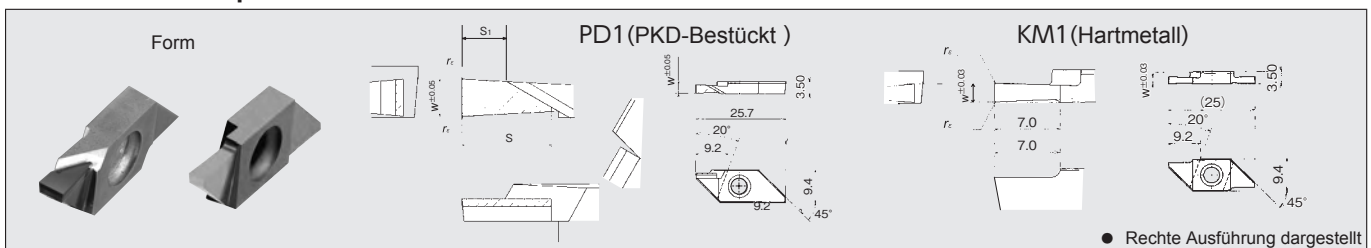
Empfohlen für Aluminiumspulen



Abmessungen und Ersatzteilm Informationen

Abb.	Artikelnr.		Bezeichnung	Standard		Abmessungen (mm)						Stechtiefe (mm) w	Platte	Ersatzteile	
	R	L		R	L	h	b	L ₁	h ₁	f	L ₂			Spannschraube	Schlüssel
1	5552401		GTPA 1010	●		10	10		10			2.0 2.5	GTPA	LRIS-4 * 10PW	CLR-15S
	5552419		1212	●		12	12	120	12	0.1	—				
	5577291		1616	●		16	16		16						
2	5563820		Y-GTPA 1216	●		12	16	120	—	0.1	20	2.0 2.5	GTPA	LRIS-4 * 12PW	CLR-15S
3	5912845		GTPA 1214H-OH	●		12	14	100	12	0.1	—				
4	5930185		Y-GTPA 1014FSS-OH	●		10	14	80			15				
	5911482		1216HS-OH	●		12	16	100	—	0.1	20				
	5911490		1616H-OH	●		16	16				25				

Wendeschneidplatten



I Bezeichnung	Abmessungen (mm)				Max Schnitttiefe	PKD		Hartmetall		
	w	s	s ₁	r _e		PD1	Standard	KM1	Standard	
GTPA20FRN01	2.0	6.0	4.0	0.1以下	5.0	5552385	●			
20FRN01		—	—		6.0				5576525	●
20FRN01-SH		4.0	2.0		3.0	5966114	●			
GTPA25FRN01	2.5	6.0	3.0		5.0	5552393	●			
25FRN01		—	—		6.0				5576533	●
25FRN01-081		4.0	1.0		3.0	5561808	●			

GTT

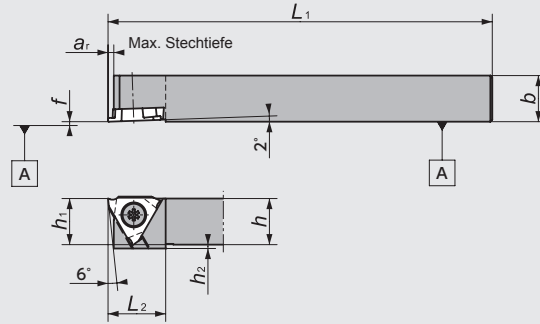
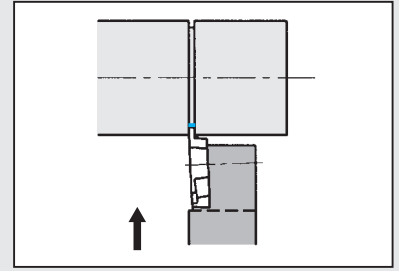


Abb. 1



● Rechte Ausführung dargestellt

GTT-OH2

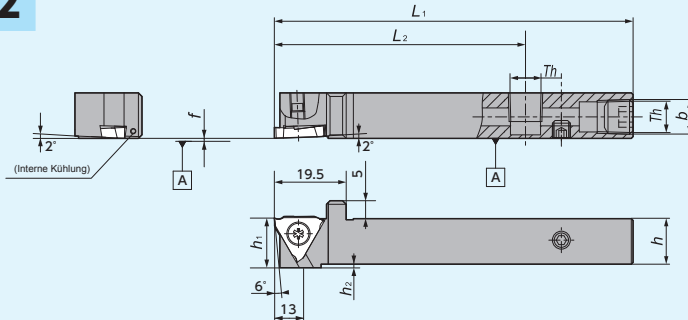
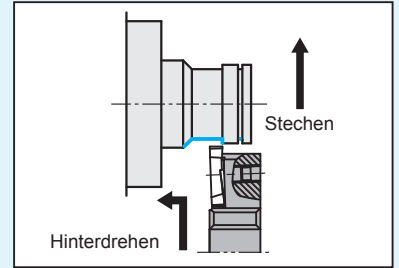


Abb. 2



● Rechte Ausführung dargestellt

GTT-OH

(Innenkühlung)

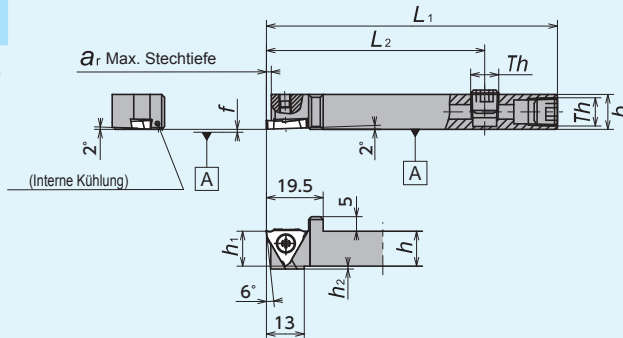
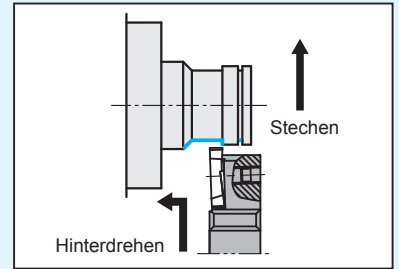


Abb. 3



● Rechte Ausführung dargestellt

CH-GTT

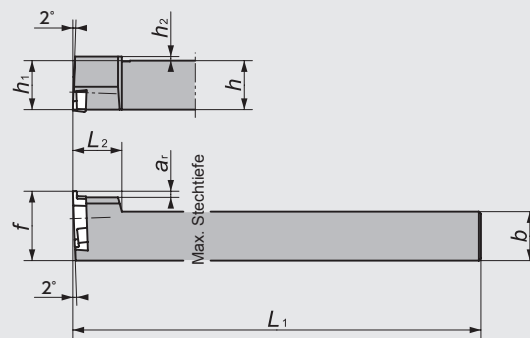
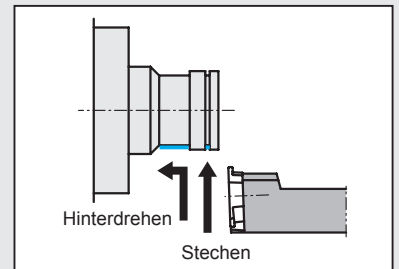


Abb. 4



☆ Rechte oder neutrale WSP verwenden
● Linke Ausführung dargestellt

DS-GTT

(DS-Halter)

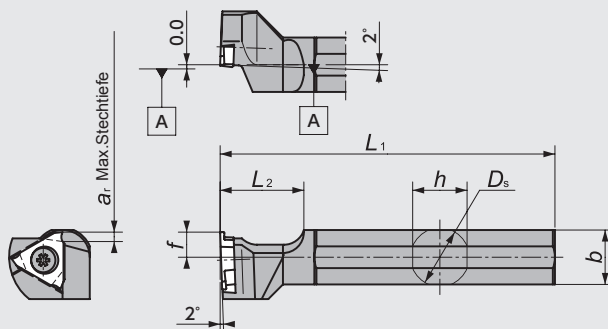
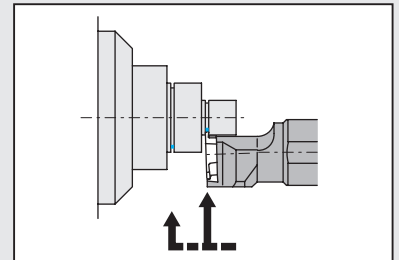

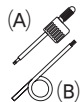


Abb. 5



☆ Rechte oder neutrale WSP verwenden
● Linke Ausführung dargestellt

Abmessungen und Ersatzteilm Informationen

Abb.	Artikelnr.		Bezeichnung	Standard		Abmessungen (mm)										Stechtiefe (mm) w	Platte 	Ersatzteile	
	R	L		R	L	h	b	L ₁	h ₁	f	L ₂	a _r	h ₂	D _s	Spannschraube			Schlüssel 	
															(A)				(B)
1	5107305	5107313	GTTR_L08F00	●	●		8	80										Rechts : LR-S-4 * 10PW (A) Links : LR-S-4 * 5,8 (B)	CLR-15S (A)
	5608682		0810F00	●		8	10		8				5				LR-S-4 * 10PW (A)		
	5107206	5107214	08K00	●	●		8										Rechts : LR-S-4 * 10PW (A) Links : LR-S-4 * 5,8 (B)		
	5608690		0810K00	●			10												
	5107321	5107339	10F00	●	●	10	10	80											
	5107222	5107230	10K00	●	●			120				1.6	3						
	5107347	5107354	12F00	●	●	12	12	80					1						
	5107248	5107255	12K00	●	●			120											
	5459896	5551387	16H00	●	●	16	16	100					0						
	5173687	5173679	16K00	●	●			120											
	5530852	5780317	20K00	●	●	20	20	125	20				0						
	5780309	5780291	25M00	●	●	25	25	150	25	0	15								
	5107362	5107370	10F15	●	●	10	10	80					3						
	5107263	5107271	10K15	●	●			120											
	5537220	5537147	12F15	●	●	12	12	80					1						
	5537246	5537162	12K15	●	●			120											
	5537261	5537188	16H15	●	●	16	16	100					0						
	5537287	5537204	16K15	●	●			120											
	5107388	5107396	10F25	●	●	10	10	80					3						
	5107289	5107297	10K25	●	●			120											
5537238	5537154	12F25	●	●	12	12	80					1							
5537253	5537170	12K25	●	●			120												
5537279	5537196	16H25	●	●	16	16	100					0							
5537295	5537212	16K25	●	●			120												
2	5035381		GTTR_L12H00-OH2	●		12	12	100	12	0	70	1.6	1					LR-S-4 * 10PW (A)	CLR-15S
	5043997		16X00-OH2	●		16	16	120	16				0						
3	5921705		GTTR_L1012H00-OH	●		10			10				1					LR-S-4 * 10PW (A)	CLR-15S (A)
	5890157		GTTR12H00-OH	●		12		100	12	0	70	1.6							
	5921713		GTTR_L16H00-OH	●		16	16		16				0						
4	5659248		CH-GTTR_L10H00	●		10	10	100	10	15			3					LR-S-4 * 9 (B)	RLR-20S (B)
	5659255		12H00	●		12	12	100	12	17	12	1.5	1						
	5960836		16H00	●		16	16	100	16	21			0						
5	5348560		DS-GTTR_L14F	●		13	13	80								14.000			
	5348081		15H	●		15	15	100								15.875			
	5341532		16X ※2	●				95								16.000			
	5278288		19	●		18	18									19.050	0.30		
	5278304		20	●		19	19	120			20	1.6				20.000			
	5324041		22 ※2	●		21	21									22.000	3.00		
	5483433		25MET	●		24	24	150								25.000			
	5317144		25	●		24	24	120								25.400			
5937693		32	●		30	30	150								32.000				

※1 Stechtiefe je nach Platte

※2 Bitte verwenden Sie bei den DS-Sleeve Haltern einen Halter DMR von 16mm / 22mm

Stechen & Längsrehen

GTMH32 (Voll-radius)

Form	Bezeichnung	Abmessungen (mm)				PVD-Beschichtetes Hartmetall			
		w	L	r _ε	Max. Stechtiefe	ZM3			
						R	Standard	L	Standard
<p>• Rechte Ausführung dargestellt</p>	GTMH32050^R/_LE025	0.50	1.2	0.25	0.9	5446125	●		
	070^R/_LE035	0.70	2.0	0.35	1.6	5446141	●		
	100^R/_LE05	1.00		0.50		5160759	●		
	150^R/_LE075	1.50	0.75	5501200		●			
	200^R/_LE10	2.00	3.0	1.00	2.7	5160775	●		
	250^R/_LE125	2.50		1.25		5921671	●		
	300^R/_LE15	3.00		1.50		5436720	●		

GTMH • X32 (Flach-Spanbrecher)

Form	Bezeichnung	Abmessungen (mm)				PVD-Beschichtetes Hartmetall				Hartmetall			
		w	L	r _ε	Max. Stechtiefe	ZM3				KM1			
						R	Standard	L	Standard	R	Standard	L	Standard
Kurz <p>• Rechte Ausführung dargestellt</p>	GTMX32100^R/_LSS	1.00	2.0	0.05	1.6	5523345	●						
	150^R/_LSS	1.50	3.0			2.7	5523337	●					
	200^R/_LSS	2.00					5523329	●					
	GTMX32100^R/_LSSH	1.00	2.0	0.05	1.6				5599394	●			
	150^R/_LSSH	1.50	3.0			2.7			5599386	●			
	200^R/_LSSH	2.00							5599378	●			
Lang <p>• Rechte Ausführung dargestellt</p>	GTMX32100^R/_LLS	1.00	2.0	0.05	1.6	5523295	●						
	150^R/_LLS	1.50	3.0			2.7	5523303	●					
	200^R/_LLS	2.00					5523311	●					