

GTW (GROOVE DUO) Series

GTWP

Side Turning Capable
For Swiss Machine

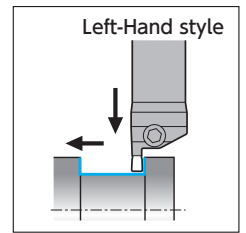
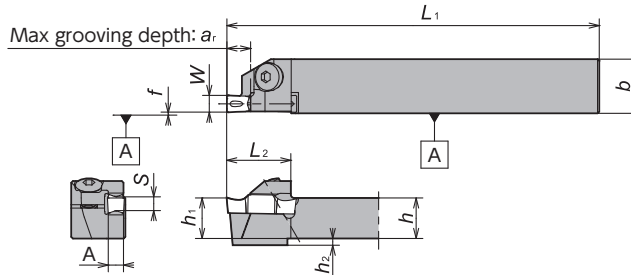


Figure-1

Right-Hand style shown

GTW Series - Toolholders



GWP

Gage Insert	Item Number	Figure	Stock		Groove Width W	a _r	h	b	h ₁	L ₁	h ₂	f	L ₂	A	Seat Size S	Clamp Screw	Wrench
			R	L													
GWP ○ 300	GTWP%08-IN3D07	1	●		.118 3	.275 7	1/2	.630 16	1/2	4.724 120	0 0	.012 0.3	.748 19	.102 2.6	D	A0B-5 × 14	LW-3S
	GTWP%10-IN3D09	1	●		.118 3	.354 9	5/8	.630 16	5/8	4.724 120	0 0	.012 0.3	.866 22	.102 2.6	D	A0B-5 × 16	LW-3S
	GTWP%1016-3D07	1	○		.118 3	.275 7	.394 10	.630 16	.472 12	4.724 120	.079 2	.012 0.3	.748 19	.102 2.6	D	A0B-5 × 14	LW-3S
	GTWP%1216-3D07	1	●		.118 3	.275 7	.472 12	.630 16	.472 12	4.724 120	0 0	.012 0.3	.768 19.5	.102 2.6	D	A0B-5 × 16	LW-3S
GWP ○ 400	GTWP%1616-3D09	1	○		.118 3	.354 9	.630 16	.630 16	.630 16	4.724 120	0 0	.012 0.3	.866 22	.102 2.6	D	A0B-5 × 16	LW-3S
	GTWP%08-IN4E07	1	●		.157 4	.275 7	1/2	.630 16	1/2	4.724 120	0 0	.012 0.3	.748 19	.138 3.5	E	A0B-5 × 14	LW-3S
	GTWP%10-IN4E09	1	●		.157 4	.354 9	5/8	.630 16	5/8	4.724 120	0 0	.012 0.3	.866 22	.138 3.5	E	A0B-5 × 16	LW-3S
	GTWP%1016-4E07	1	○		.157 4	.275 7	.394 10	.630 16	.472 12	4.724 120	.079 2	.012 0.3	.748 19	.138 3.5	E	A0B-5 × 14	LW-3S
GWP ○ 500	GTWP%1216-4E07	1	●		.157 4	.275 7	.472 12	.630 16	.472 12	4.724 120	0 0	.012 0.3	.768 19.5	.138 3.5	E	A0B-5 × 16	LW-3S
	GTWP%1616-4E09	1	○		.157 4	.354 9	.630 16	.630 16	.630 16	4.724 120	0 0	.012 0.3	.866 22	.138 3.5	E	A0B-5 × 16	LW-3S
	GTWP%1016-5F07	1	○		.197 5	.275 7	.394 10	.630 16	.472 12	4.724 120	.079 2	.012 0.3	.748 19	.177 4.5	F	A0B-5 × 14	LW-3S
	GTWP%1216-5F07	1	○		.197 5	.275 7	.472 12	.630 16	.472 12	4.724 120	0 0	.012 0.3	.768 19.5	.177 4.5	F	A0B-5 × 16	LW-3S
GWP ○ 600	GTWP%1616-5F09	1	○		.197 5	.354 9	.630 16	.630 16	.630 16	4.724 120	0 0	.012 0.3	.866 22	.177 4.5	F	A0B-5 × 16	LW-3S
	GTWP%1020-6G07	1	○		.236 6	.275 7	.394 10	.787 20	.394 10	4.724 120	.079 2	.012 0.3	.866 22	.209 5.3	G	A0B-5 × 14	LW-3S
	GTWP%1220-6G07	1	○		.236 6	.275 7	.472 12	.787 20	.472 12	4.724 120	0 0	.012 0.3	.886 22.5	.209 5.3	G	A0B-5 × 16	LW-3S
	GTWP%1620-6G09	1	○		.236 6	.354 9	.630 16	.787 20	.630 16	4.724 120	0 0	.012 0.3	.984 25	.209 5.3	G	A0B-5 × 16	LW-3S

GTW Series - Inserts

Shape	Item Number	w		r _e	M	L	Seat Size S	Coated Carbide DM4
		Groove Width (Inch) (mm)	Width Tolerance (Inch) (mm)					
<p>GWPG: Outside ground GWPM: Full-molded</p> <ul style="list-style-type: none"> ● Excellent chip control ● Best for side turning 	GWPG300N02D-GW	.118 3.0	.001 ± 0.025	.008 0.2	.098 2.5	.811 20.6	D	●
	GWPG300N04D-GW	.118 3.0	.001 ± 0.025	.016 0.4	.098 2.5	.811 20.6	D	●
	GWPG400N02E-GW	.157 4.0	.001 ± 0.025	.008 0.2	.134 3.4	.811 20.6	E	●
	GWPG400N04E-GW	.157 4.0	.001 ± 0.025	.016 0.4	.134 3.4	.811 20.6	E	●
	GWPG400N08E-GW	.157 4.0	.001 ± 0.025	.031 0.8	.134 3.4	.811 20.6	E	●
	GWPG500N02F-GW	.197 5.0	.001 ± 0.025	.008 0.2	.169 4.3	.811 20.6	F	○
	GWPG500N04F-GW	.197 5.0	.001 ± 0.025	.016 0.4	.169 4.3	.811 20.6	F	○
	GWPG500N08F-GW	.197 5.0	.001 ± 0.025	.031 0.8	.169 4.3	.811 20.6	F	○
	GWPG600N02G-GW	.236 6.0	.001 ± 0.025	.008 0.2	.205 5.2	1.008 25.6	G	○
	GWPG600N04G-GW	.236 6.0	.001 ± 0.025	.016 0.4	.205 5.2	1.008 25.6	G	○
<ul style="list-style-type: none"> ● Less tool pressure design 	GWPM300N04D-GW	.118 3.0	.002 ± 0.05	.016 0.4	.098 2.5	.811 20.6	D	○
	GWPM400N04E-GW	.157 4.0	.002 ± 0.05	.016 0.4	.134 3.4	.811 20.6	E	○
	GWPM500N04F-GW	.197 5.0	.002 ± 0.05	.016 0.4	.169 4.3	.811 20.6	F	○
	GWPM600N04G-GW	.236 6.0	.002 ± 0.05	.016 0.4	.205 5.2	1.008 25.6	G	○
	GWPG300N02D-GV	.118 3.0	.001 ± 0.025	.008 0.2	.205 2.5	.811 20.6	D	●
	GWPG300N04D-GV	.118 3.0	.001 ± 0.025	.016 0.4	.205 2.5	.811 20.6	D	●
	GWPG400N02E-GV	.157 4.0	.001 ± 0.025	.008 0.2	.169 4.3	.811 20.6	E	●
	GWPG400N04E-GV	.157 4.0	.001 ± 0.025	.016 0.4	.169 4.3	.811 20.6	E	●
	GWPG500N02F-GV	.197 5.0	.001 ± 0.025	.008 0.2	.169 4.3	.811 20.6	F	○
	GWPG500N04F-GV	.197 5.0	.001 ± 0.025	.016 0.4	.169 4.3	.811 20.6	F	○
GWPG600N02G-GV	.236 6.0	.001 ± 0.025	.008 0.2	.169 4.3	1.008 25.6	G	○	
GWPG600N04G-GV	.236 6.0	.001 ± 0.025	.016 0.4	.169 4.3	1.008 25.6	G	○	

● : Stock
● : Stock (Newly added)
■ □ □ □ : While stocks last

R L : Stock (Right / Left-hand only)
R L : Stock (Right / Left-hand only, Newly added)
⊙ : Mirror finish

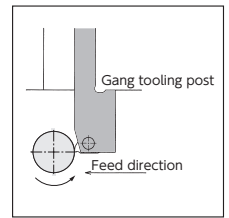
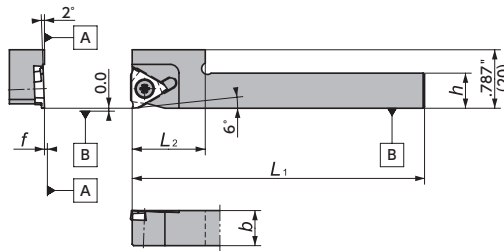
○ : 1-2 week delivery
○ : 1-2 week delivery (Newly added)
⦿ : Coolant through

Ⓜ : 1-2 week delivery (Right / Left-hand only)
Ⓜ : 1-2 week delivery (Right / Left-hand only, Newly added)

Grooving / Side-Turning

Y-GTT

Screw accessible from both sides

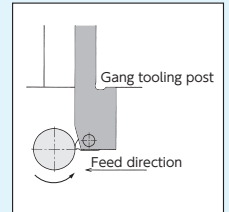
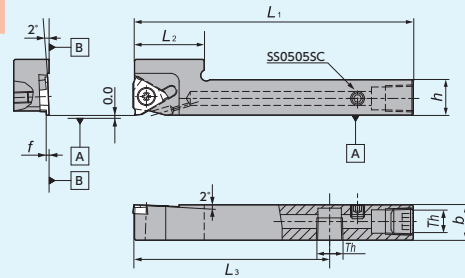


Right-Hand style shown
Takes Right-hand Insert

Figure-5

Y-GTT-OH2 (Coolant through)

Screw accessible from both sides



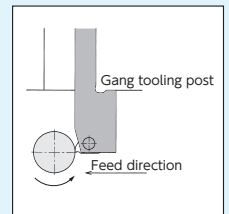
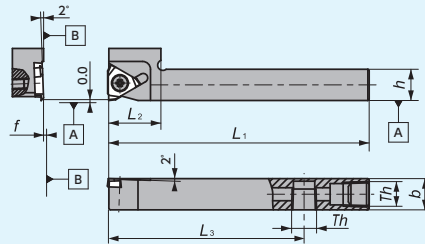
Right-Hand style shown
Takes Right-hand Insert

Figure-6

Th (Thread type)
Inch size holder : NPT1/8
Metric size holder: Rc1/8 (PT1/8)

Y-GTT-OH (Coolant through)

Screw accessible from both sides



Right-Hand style shown
Takes Right-hand Insert

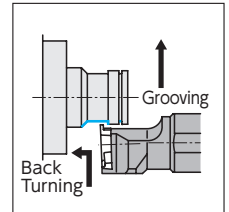
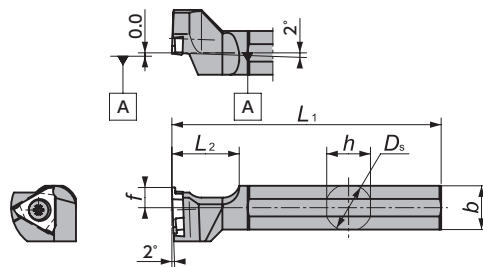
Figure-7

Th (Thread type)
Inch size holder : NPT1/8
Metric size holder: Rc1/8 (PT1/8)

GTT

Gage Insert	Item Number	Figure	Stock		Groove Width W		h	b	h ₁	L ₁	f	L ₂	a _r	L ₃	Th	Clamp Screw	Wrench								
			R	L	(Inch)	(mm)												(Inch)	(mm)						
	Y-GTTR%06-IN	5	●	○	.012-.125	0.30-3.17	3/8	3/8	-	4.724	120	.000	0	.984	25.0	.063	1.6	-	-	-	LR-5-4×10PW	CLR-155			
	Y-GTTR%08-IN	5	●	○	.012-.125	0.30-3.17	1/2	1/2	-	4.724	120	.000	0	.984	25.0	.063	1.6	-	-	-	-	LR-5-4×10PW	CLR-155		
	Y-GTTR%10-IN	5	●	○	.012-.125	0.30-3.17	5/8	5/8	-	4.724	120	.000	0	.984	25.0	.063	1.6	-	-	-	-	LR-5-4×10PW	CLR-155		
	Y-GTT%10MS	7	○	○	.012-.125	0.30-3.17	.394	10	.394	10	-	4.724	120	.000	0	.866	22.0	.063	1.6	-	-	-	LR-5-4×10PW	CLR-155	
	Y-GTT%110S	5	○	○	.012-.125	0.30-3.17	.394	10	.394	10	-	4.724	120	.000	0	.787	20.0	.063	1.6	-	-	-	LR-5-4×10PW	CLR-155	
	Y-GTT%12MS	7	○	○	.012-.125	0.30-3.17	.472	12	.472	12	-	4.724	120	.000	0	.866	22.0	.063	1.6	-	-	-	LR-5-4×10PW	CLR-155	
	Y-GTT%12S	5	○	○	.012-.125	0.30-3.17	.472	12	.472	12	-	4.724	120	.000	0	.787	20.0	.063	1.6	-	-	-	LR-5-4×10PW	CLR-155	
	Y-GTT%08H-IN-OH	7	■	○	.012-.125	0.30-3.17	1/2	1/2	-	3.937	100	.000	0	.984	25.0	.063	1.6	2.756	70	NPT1/8	-	LR-5-4×10PW	CLR-155		
	Y-GTT%08H-OH2	6	■	○	.012-.125	0.30-3.17	1/2	1/2	-	3.937	100	.000	0	.984	25.0	.063	1.6	2.953	75	NPT1/8	-	LR-5-4×10PW	CLR-155		
	Y-GTT%12H00S-OH	7	■	○	.012-.125	0.30-3.17	.472	12	.472	12	-	3.937	100	.000	0	.787	20.0	.063	1.6	2.756	70	Rc1/8(PT1/8)	-	LR-5-4×10PW	CLR-155
	Y-GTT%12H00S-OH2	6	■	○	.012-.125	0.30-3.17	.472	12	.472	12	-	3.937	100	.000	0	.787	20.0	.063	1.6	2.953	75	Rc1/8(PT1/8)	-	LR-5-4×10PW	CLR-155
	Y-GTT%16H00-OH	7	○	○	.012-.125	0.30-3.17	.630	16	.472	16	-	3.937	100	.000	0	.984	25.0	.063	1.6	2.953	75	Rc1/8(PT1/8)	-	LR-5-4×10PW	CLR-155

DS-GTT



Left-Hand style shown
Takes Right-hand Insert

Figure-8

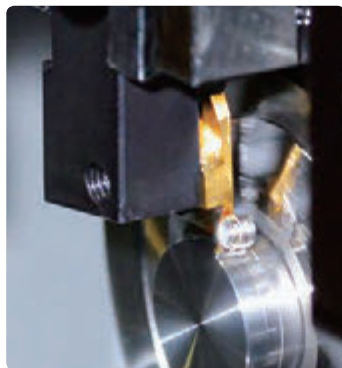
DS-GTT

Gage Insert	Item Number	Figure	Stock		D _s		h		b		L ₁	f	L ₂		Clamp Screw	Wrench		
			R	L	(Inch)	(mm)	(Inch)	(mm)	(Inch)	(mm)			(Inch)	(mm)				
	DS-GTT%14F	8	○	○	.551	14.000	.512	13	.512	13	3.150	80	.236	6	.787	20	LR-5-4×9	RLR-20S
	DS-GTT%15H	8	○	○	.578	15.875	.591	15	.591	15	3.937	100	.236	6	.787	20	LR-5-4×9	RLR-20S
	DS-GTT%16X	8	●	○	.630	16.000	.591	15	.591	15	3.740	95	.236	6	.787	20	LR-5-4×9	RLR-20S
	DS-GTT%19	8	●	○	.374	19.050	.709	18	.709	18	4.724	120	.236	6	.787	20	LR-5-4×9	RLR-20S
	DS-GTT%20	8	●	○	.787	20.000	.748	19	.748	19	4.724	120	.236	6	.787	20	LR-5-4×9	RLR-20S
	DS-GTT%22	8	●	○	.866	22.000	.827	21	.827	21	4.724	120	.236	6	.787	20	LR-5-4×9	RLR-20S
	DS-GTT%25-MET	8	○	○	.984	25.000	.945	24	.945	24	4.724	120	.394	10	.787	20	LR-5-4×9	RLR-20S
	DS-GTT%25	8	●	○	1	25.400	.945	24	.945	24	5.906	150	.394	10	.787	20	LR-5-4×9	RLR-20S
	DS-GTT%32	8	○	○	.984	25.000	.945	24	.945	24	5.906	150	.394	10	.787	20	LR-5-4×9	RLR-20S

● : Stock
● : Stock (Newly added)
■ : While stocks last
R L : Stock (Right / Left-hand only)
R L : Stock (Right / Left-hand only, Newly added)
○ : 1-2 week delivery
○ : 1-2 week delivery (Newly added)
⊗ : 1-2 week delivery (Right / Left-hand only)
⊗ : 1-2 week delivery (Right / Left-hand only, Newly added)
⊕ : Mirror finish

Grooving / Side-Turning

GTMH-GX Chipbreaker for Grooving / Side Turning



Features

- Can solve the problem of chips remaining in the grooves and bird's nest of chips
- Good surface finishes on groove side faces
- UP to .078" DOC side turning capability

Excellent Chip Control

• Grooving

	Feed rate (IPR)	.0004"	.0011"	.0020"
	DOC			
	GX chipbreaker			
	Competitor's chipbreaker			

Material : 304 SS (φ .630"), 260 SFM, .059", DOC

• Side Turning

	Feed rate (IPR)	.0004"	.0011"	.0020"	.0031"
	DOC				
	.010"				
	.020"				
	.030"				

Material : 304 SS (φ .630"), 260 SFM, .030" width insert

Best Solution for Chip Control

Coolant through toolholders now available



GTMH32.. Inserts - Carbide

■ GTMH32-GX

Shape	Item Number	Groove Width W		Max Depth of Cut				L		r _ε		Coated Carbide					
		(Inch)	(mm)	Grooving		Side turning		(Inch)	(mm)	(Inch)	(mm)	ST4		DM4		TM4	
				(Inch)	(mm)	(Inch)	(mm)					R	L	R	L	R	L
<p>Right-Hand style shown</p>	GTMH32033RGX	.013	0.33	.024	0.6	—	—	.010	0.25	.002	0.05	●					
	GTMH32043RGX	.017	0.43	.047	1.2	—	—	.035	0.90	.002	0.05	●					
	GTMH32050RGX	.020	0.50	.047	1.2	—	—	.035	0.90	.002	0.05	●					
	GTMH32053RGX	.021	0.53	.047	1.2	—	—	.035	0.90	.002	0.05	●					
	GTMH32075RGX	.030	0.75	.063	1.6	.030	0.75	.079	2.00	.002	0.05	●	●			○	
	GTMH32095RGX	.037	0.95	.063	1.6	.059	1.50	.079	2.00	.002	0.05	●	●			○	
	GTMH32100RGX	.039	1.00	.063	1.6	.059	1.50	.079	2.00	.002	0.05	●	●			○	
	GTMH32100RGX01	.039	1.00	.063	1.6	.059	1.50	.079	2.00	.004	0.1	●	●			○	
	GTMH32150RGX	.059	1.50	.106	2.7	.079	2.00	.118	3.00	.002	0.05	●	●			○	
	GTMH32150RGX01	.059	1.50	.106	2.7	.079	2.00	.118	3.00	.004	0.1	●	●			○	
	GTMH32150RGX02	.059	1.50	.106	2.7	.079	2.00	.118	3.00	.008	0.2	●	●			○	
	GTMH32200RGX	.079	2.00	.106	2.7	.079	2.00	.118	3.00	.002	0.05	●	●			○	
	GTMH32200RGX01	.079	2.00	.106	2.7	.079	2.00	.118	3.00	.004	0.1	●	●			○	
	GTMH32200RGX02	.079	2.00	.106	2.7	.079	2.00	.118	3.00	.008	0.2	●	●			○	
	GTMH32300RGX	.118	3.00	.106	2.7	.079	2.00	.118	3.00	.002	0.05	●	●			○	
GTMH32300RGX02	.118	3.00	.106	2.7	.079	2.00	.118	3.00	.008	0.2	●	●			○		

GTMX32

Shape	Item Number	Groove Width W		Max Depth of Cut Grooving		L		r _ε		Coated Carbide			
		(Inch)	(mm)	(Inch)	(mm)	(Inch)	(mm)	(Inch)	(mm)	DT4		QM3	
										R	L	R	L
	GTMX32030%LT	.012	0.30	.010	0.25	.024	0.6	.002	0.05	○		●	
	GTMX32033%LT	.013	0.33	.010	0.25	.024	0.6	.002	0.05	○		●	
	GTMX32043%LT	.017	0.43	.035	0.9	.047	1.2	.002	0.05	○		●	
	GTMX32050%LT	.020	0.50	.035	0.9	.047	1.2	.002	0.05	○		●	■
	GTMX32053%LT	.021	0.53	.035	0.9	.047	1.2	.002	0.05	○		●	
	GTMX32065%LT	.026	0.65	.035	0.9	.047	1.2	.002	0.05	○		●	
	GTMX32075%LT	.030	0.75	.063	1.6	.079	2.0	.002	0.05	○	○	●	●
	GTMX32080%LT	.031	0.80	.063	1.6	.079	2.0	.002	0.05	○		●	■
	GTMX32095%LT	.037	0.95	.063	1.6	.079	2.0	.002	0.05	○	○	○	○
	GTMX32100%LT	.039	1.00	.063	1.6	.079	2.0	.002	0.05	○		○	
	GTMX32100%LT01	.039	1.00	.063	1.6	.079	2.0	.004	0.1	○		●	
	GTMX32110%LT	.043	1.10	.063	1.6	.079	2.0	.002	0.05	○		○	
	GTMX32120%LT	.047	1.20	.063	1.6	.079	2.0	.002	0.05	○		●	
	GTMX32120%LT01	.047	1.20	.063	1.6	.079	2.0	.004	0.1	○		●	
	GTMX32125%LT	.049	1.25	.063	1.6	.079	2.0	.002	0.05	○		●	
	GTMX32130%LT	.051	1.30	.063	1.6	.079	2.0	.002	0.05	○		○	
	GTMX32140%LT	.055	1.40	.063	1.6	.079	2.0	.002	0.05	○		○	
	GTMX32145%LT	.057	1.45	.106	2.7	.118	3.0	.002	0.05	○		○	
	GTMX32150%LT	.059	1.50	.106	2.7	.118	3.0	.002	0.05	○	○	●	●
	GTMX32150%LT01	.059	1.50	.106	2.7	.118	3.0	.004	0.1	○		●	
	GTMX32150%LT02	.059	1.50	.106	2.7	.118	3.0	.008	0.2	○		○	
	GTMX32160%LT	.063	1.60	.106	2.7	.118	3.0	.002	0.05	○		●	
	GTMX32175%LT	.069	1.75	.106	2.7	.118	3.0	.002	0.05	○		○	●
	GTMX32180%LT	.071	1.80	.106	2.7	.118	3.0	.002	0.05	○		○	□
	GTMX32200%LT	.079	2.00	.106	2.7	.118	3.0	.002	0.05	○	○	●	●
	GTMX32200%LT01	.079	2.00	.106	2.7	.118	3.0	.004	0.1	○	○	○	○
GTMX32200%LT02	.079	2.00	.106	2.7	.118	3.0	.008	0.2	○		○		
GTMX32250%LT	.098	2.50	.106	2.7	.118	3.0	.002	0.05	○	○	●	○	
GTMX32250%LT01	.098	2.50	.106	2.7	.118	3.0	.004	0.1	○		○		
GTMX32250%LT02	.098	2.50	.106	2.7	.118	3.0	.008	0.2	○		○		
GTMX32300%LT	.118	3.00	.106	2.7	.118	3.0	.002	0.05	○		●		
GTMX32300%LT02	.118	3.00	.106	2.7	.118	3.0	.008	0.2	○		●		

Right-Hand style shown

Grooving / Side-Turning

GTMH32 - VT Mirror finish

Shape	Item Number	Groove Width W		Max Depth of Cut Grooving		L		r _ε		Coated Carbide	
		(Inch)	(mm)	(Inch)	(mm)	(Inch)	(mm)	(Inch)	(mm)	VM1	
										R	L
	GTMH32033%VT M	.013	0.33	.010	0.25	.024	0.6	0.0	0.0	●	
	GTMH32043%VT M	.017	0.43	.035	0.9	.047	1.2	0.0	0.0	●	
	GTMH32053%VT M	.021	0.53	.063	1.6	.079	2.0	0.0	0.0	●	
	GTMH32065%VT M	.026	0.65	.063	1.6	.079	2.0	0.0	0.0	●	
	GTMH32075%VT M	.030	0.75	.063	1.6	.079	2.0	0.0	0.0	●	
	GTMH32080%VT M	.031	0.80	.063	1.6	.079	2.0	0.0	0.0	○	
	GTMH32085%VT M	.033	0.85	.063	1.6	.079	2.0	0.0	0.0	○	
	GTMH32095%VT M	.037	0.95	.063	1.6	.079	2.0	0.0	0.0	○	
	GTMH32100%VT M	.039	1.00	.063	1.6	.079	2.0	0.0	0.0	●	
	GTMH32110%VT M	.043	1.10	.063	1.6	.079	2.0	0.0	0.0	○	
	GTMH32120%VT M	.047	1.20	.063	1.6	.079	2.0	0.0	0.0	○	
	GTMH32130%VT M	.051	1.30	.063	1.6	.079	2.0	0.0	0.0	○	
	GTMH32140%VT M	.055	1.40	.063	1.6	.079	2.0	0.0	0.0	○	
	GTMH32150%VT M	.059	1.50	.106	2.7	.118	3.0	0.0	0.0	●	
GTMH32200%VT M	.079	2.00	.106	2.7	.118	3.0	0.0	0.0	●		

Right-Hand style shown

Side turning instruction for GTMH-GX / GTMX-T / GTMH-VT

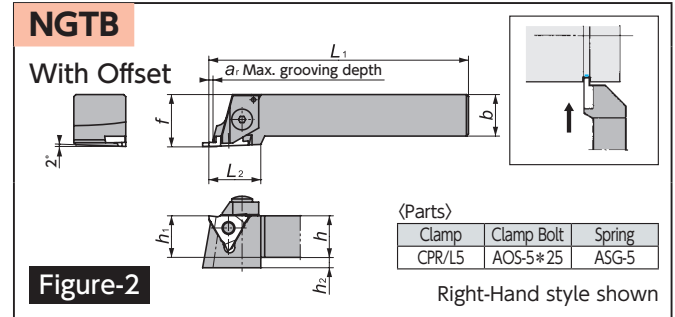
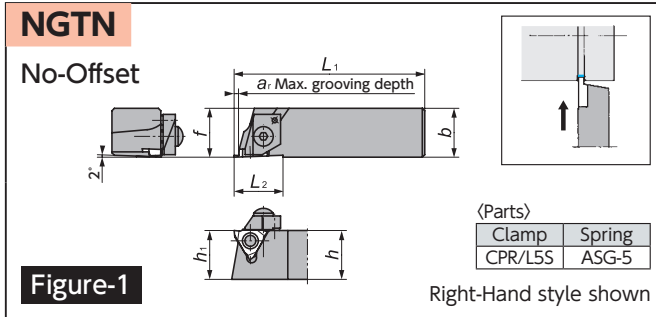
- ① To perform side turning with an insert whose groove width is greater than .017" set side turning feed rate to .001 IPR or smaller.
- ② When performing side turning with an insert whose groove width is greater than .017" and the feed rate is over .001 IPR (.004 IPR max), it is likely that chips will damage grooved sides. In this case, please perform grooving in two or more passes to make room for chips before performing side turning.

Holders → T10

Cutting condition → T4

● : Stock
 ● : Stock (Newly added)
 ■ □ □ : While stocks last
 R L : Stock (Right / Left-hand only)
 R L : Stock (Right / Left-hand only, Newly added)
 M : Mirror finish
 ○ : 1-2 week delivery
 ○ : 1-2 week delivery (Newly added)
 ● : Coolant through
 (R) (L) : 1-2 week delivery (Right / Left-hand only)
 (R) (L) : 1-2 week delivery (Right / Left-hand only, Newly added)

GTM.43 Series - Toolholders



GTM.43 Series - Toolholders

NGTN / NTGB

Gage Insert	Item Number	Figure	Stock		Groove Width Range		a_r	h	b	h_1	L_1	f	L_2	h_2	Clamp Screw	Wrench
			R	L	(Inch)	(mm)										
GTM43 GTMA43 GTMT43	NGTN%161643-20	1	○	○	.079-.137	2.00-3.49	.177 4.5	.630 16	.630 16	.630 16	3.071 78	.630 16	.787 20	.354 9	AOS-5 × 20	LW-2.5
	NGTN%161643-35	1	○	○	.138-.217	3.50-5.50	.177 4.5	.630 16	.630 16	.630 16	3.071 78	.630 16	.787 20	.354 9	AOS-5 × 20	LW-2.5
	NGTB%161643-00S	2	○	○	.039-.098	1.00-2.49	.118 3.0	.630 16	.630 16	.630 16	3.150 100	.787 20	.984 25	.354 9	AOS-5 × 25	LW-2.5
	NGTB%161643-20S	2	○	○	.079-.137	2.00-3.49	.177 4.5	.630 16	.630 16	.630 16	3.150 100	.787 20	.984 25	.354 9	AOS-5 × 25	LW-2.5
	NGTB%161643-35S	2	○	○	.138-.217	3.50-5.50	.177 4.5	.630 16	.630 16	.630 16	3.150 100	.787 20	.984 25	.354 9	AOS-5 × 25	LW-2.5

GTMA43.. Inserts - Carbide

GTMT43 / GTMA43

Shape	Item Number	Groove Width w		Max Depth of Cut		L		r_ϵ		s		Coated Carbide			
		(Inch)	(mm)	(Inch)	(mm)	(Inch)	(mm)	(Inch)	(mm)	(Inch)	(mm)	DM4		QM3	
												R	L	R	L
	GTMT43145%	.057	1.45	.118	3.0	.138	3.5	.008	0.2	.187	4.76	○	○	○	○
	GTMT43150%	.059	1.50	.118	3.0	.138	3.5	.008	0.2	.187	4.76	○	○	○	○
	GTMT43175%	.069	1.75	.118	3.0	.138	3.5	.008	0.2	.187	4.76	○	○	○	○
	GTMT43185%	.073	1.85	.118	3.0	.138	3.5	.008	0.2	.187	4.76	○	○	○	○
	GTMT43200%	.079	2.00	.118	3.0	.138	3.5	.008	0.2	.187	4.76	○	○	○	○
	GTMT43230%	.091	2.30	.118	3.0	.138	3.5	.008	0.2	.187	4.76	○	○	○	○
	GTMT43250%	.098	2.50	.169	4.3	.217	5.5	.012	0.3	.187	4.76	○	○	○	○
	GTMT43265%	.104	2.65	.169	4.3	.217	5.5	.012	0.3	.187	4.76	○	○	○	○
	GTMT43280%	.110	2.80	.169	4.3	.217	5.5	.012	0.3	.187	4.76	○	○	○	○
	GTMT43300%	.118	3.00	.169	4.3	.217	5.5	.012	0.3	.187	4.76	○	○	○	○
	GTMT43330%	.130	3.30	.169	4.3	.217	5.5	.012	0.3	.187	4.76	○	○	○	○
	GTMT43350%	.138	3.50	.169	4.3	.217	5.5	.012	0.3	.187	4.76	○	○	○	○
	GTMT43400%	.157	4.00	.169	4.3	.217	5.5	.016	0.4	.187	4.76	○	○	○	○
	GTMT43450%	.177	4.50	.169	4.3	.217	5.5	.016	0.4	.187	4.76	○	○	○	○
	GTMT43500%	.197	5.00	.169	4.3	.217	5.5	.016	0.4	.227	5.76	○	○	○	○
GTMT43550%	.217	5.50	.169	4.3	.217	5.5	.016	0.4	.227	5.76	○	○	○	○	

GTMA43 (Full Radius style)

Shape	Item Number	Groove Width w		Max Depth of Cut		L		r_ϵ		Coated Carbide			
		(Inch)	(mm)	(Inch)	(mm)	(Inch)	(mm)	(Inch)	(mm)	QM3			
										R	L		
	GTMA43200%10R	.079	2.00	.118	3.0	.138	3.5	.039	1.0	○			
	GTMA43300%15R	.118	3.00	.177	4.5	.217	5.5	.059	1.5	○			
	GTMA43400%20R	.157	4.00	.177	4.5	.217	5.5	.787	2.0	○			
	GTMA43100%J05R	.039	1.00	.063	1.6	.079	2.0	.020	0.50				
	GTMA43150%J075R	.059	1.50	.118	3.0	.138	3.5	.030	0.75				
	GTMA43200%J10R	.079	2.00	.118	3.0	.138	3.5	.039	1.00				
	GTMA43250%J125R	.098	2.50	.157	4.0	.217	5.5	.049	1.25				
GTMA43300%J15R	.118	3.00	.157	4.0	.217	5.5	.059	1.50					

Cutting condition → T4

- : Stock
- : Stock (Newly added)
- : While stocks last
- R L : Stock (Right / Left-hand only)
- R L : Stock (Right / Left-hand only, Newly added)
- ⊙ : Mirror finish
- : 1-2 week delivery
- : 1-2 week delivery (Newly added)
- ⦿ : Coolant through
- Ⓡ : 1-2 week delivery (Right / Left-hand only)
- Ⓡ : 1-2 week delivery (Right / Left-hand only, Newly added)